

# Champion<sup>®</sup>

The Dishwashing Machine Specialists

PROJECT: \_\_\_\_\_

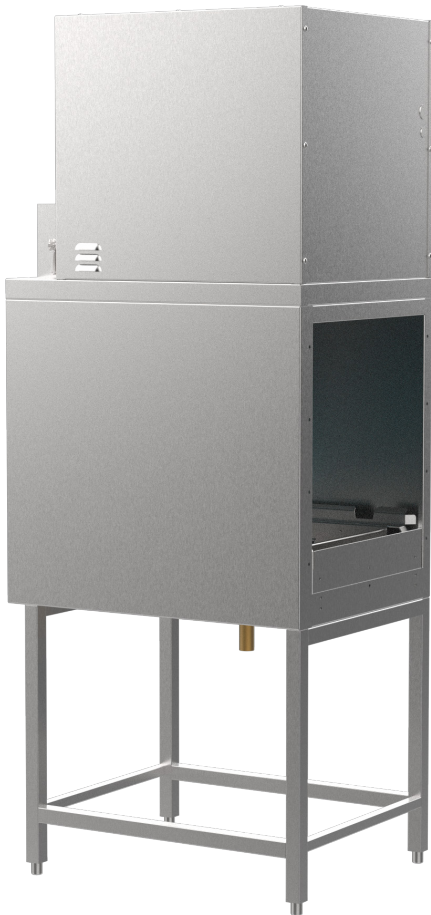
ITEM # \_\_\_\_\_ QTY: \_\_\_\_\_

MODEL # \_\_\_\_\_

AIA # \_\_\_\_\_ SIS # \_\_\_\_\_

## 33BD-PRO

### BLOWER-DRYER FOR RACK CONVEYORS



*Rendered image is for general visual representation only. Please refer to specifications for the latest detailed product information.*



#### STANDARD FEATURES

- Automatic heat cutoff (when conveyor stops)
- Blower motor, 2-Hp
- Choice of electric or steam heat
- Control circuit, 120-volt, completely inter-wired with dishwashing machine controls
- Heavy gauge stainless steel frame and cabinet
- Machine vent connection, 7" stack with locking damper
- Thermal overload protection for electrical blower-dryer
- 33" Hood design

#### SPECIFICATIONS

<b>Motor Horsepower</b>	2
<b>Heating</b>	
Electric, (kW)	8
Steam (lbs./hr. required at 10 psi flow pressure)	65

#### SPECIFIER STATEMENT

Specified unit will be Champion model 33BD-PRO blower-dryer for rack conveyor dishwashing machines. Features include automatic heat cut-off, 2-Hp blower motor.

1 year parts and labor warranty.

This EBD catalog sheet is designed to be used in conjunction with the Champion Rack Conveyor Series catalog sheets.

##### In the USA:

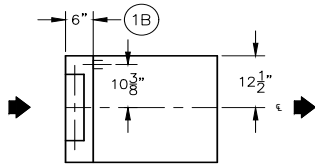
3765 Champion Blvd, Winston-Salem, NC 27105  
Tel: (336) 661-1556 Fax: (336) 661-1979  
[www.championindustries.com](http://www.championindustries.com)

##### In Canada:

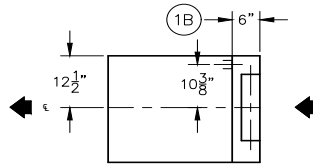
2674 N. Service Rd., Jordan Station, Ontario, Canada L0R1S0  
Tel: (905) 562-4195 Fax: (905) 562-4618  
[www.championindustries.com/1canada](http://www.championindustries.com/1canada)

## Electric

### Left to Right



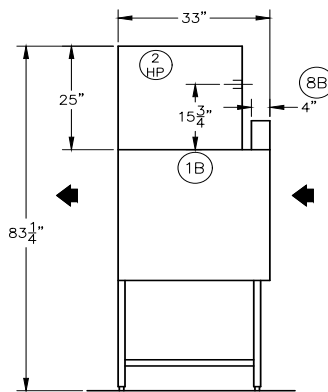
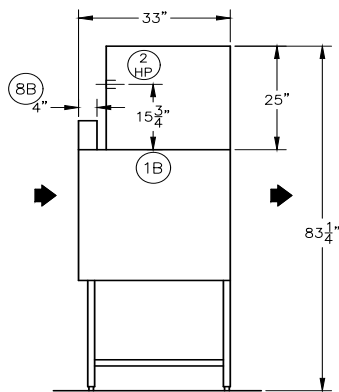
### Right to Left



①B - Machine main electrical supply (see table below)

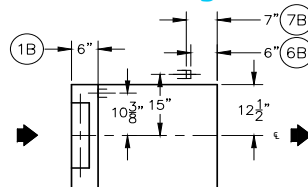
⑥B - Steam (10-30 PSI) Flow Press  
3/4" NPT Blower/Dryer  
65 lb/hr. Consumption

⑦B - Condensate No Back Pressure  
1/2" NPT Blower/Dryer  
Return to Boiler

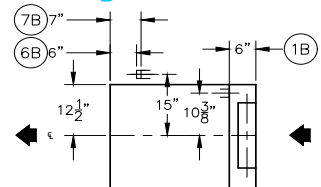


## Steam

### Left to Right



### Right to Left



Model 33BD-PRO Electric Heat

Elec. Specs	Rated Amps	Minimum Supply Ckt. Conductor Ampacity	Maximum Overcurrent Protective Device
208/60/3	29	40	40
240/60/3	26	35	35
480/60/3	13	20	20
575/60/3	11	15	15

Note: When machine is equipped with blower/dryer system, for normal size dishroom, the dishroom ventilation should be increased by 600 CFM.

Model 33BD-PRO Steam Heat

Elec. Specs	Rated Amps	Minimum Supply Ckt. Conductor Ampacity	Maximum Overcurrent Protective Device
208/60/3	7	15	15
240/60/3	6	15	15
480/60/3	3	15	15
575/60/3	3	15	15

Note: When machine is equipped with blower/dryer system, for normal size dishroom, the dishroom ventilation should be increased by 600 CFM.

