

PRO-90B U (90° UNLOAD TABLE)

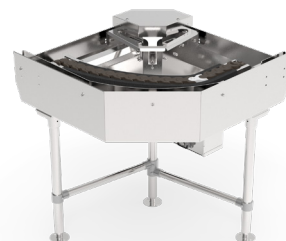
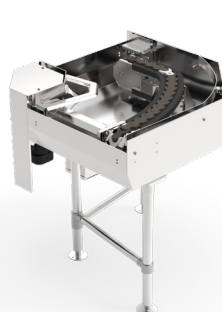
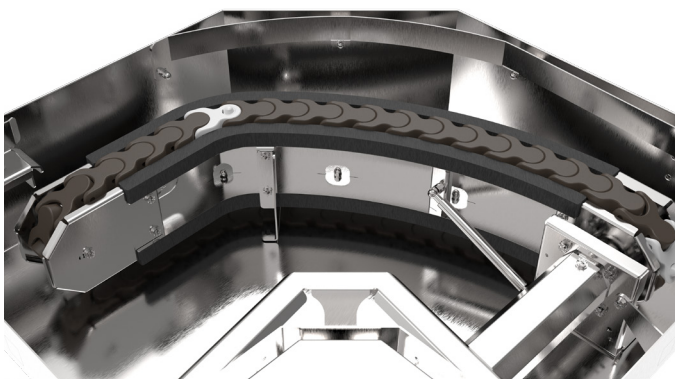
POWERED UNLOADER FOR PRO SERIES RACK CONVEYORS



Rendered image is for general visual representation only. Please refer to specifications for the latest detailed product information.

STANDARD FEATURES

- Patent pending compact, flexible design
- Fits high volume operations
- Quality stainless steel construction
- Fully-automatic operation
- Chain conveyor lifts for easy cleaning
- Great solution for turning corners
- Sloped drain conveys water efficiently
- Quick-connect receptacle for error proof wiring to dishwasher
- Easily handles 18"x26" sheet pans



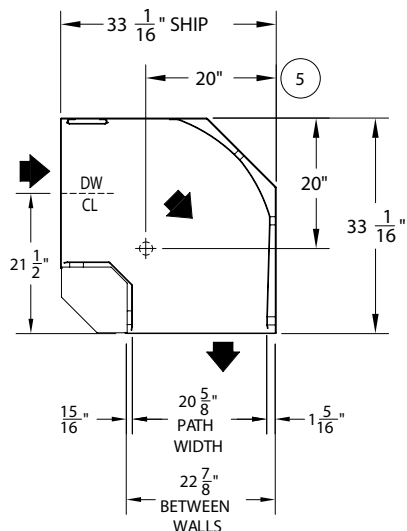
SPECIFIER STATEMENT

Specified unit will be Champion Model PRO-90B 90° unload table designed to be mounted to Champion rack conveyor dishmachines only.

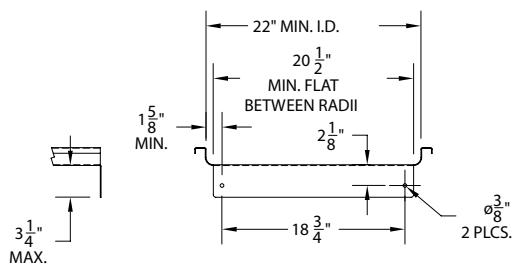
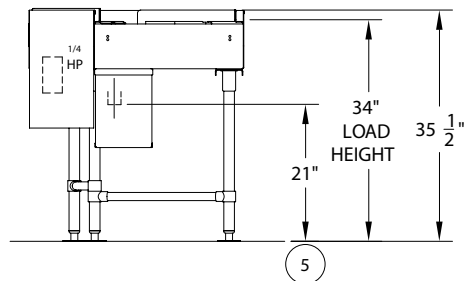
1 year parts and labor warranty. c 

In the USA:
3765 Champion Blvd, Winston-Salem, NC 27105
Tel: (800) 532-8591 Fax: (336) 661-1979
www.bilinesystems.com

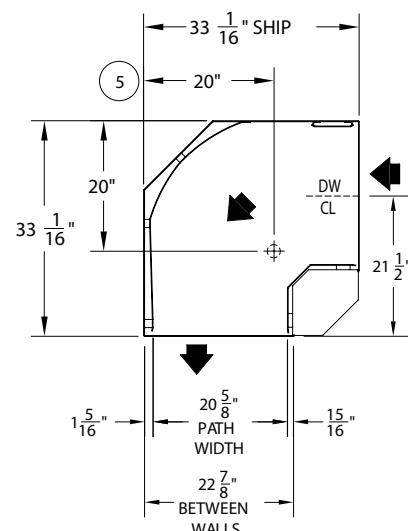
In Canada:
2674 N. Service Rd., Jordan Station, Ontario, Canada L0R1S0
Tel: (905) 562-4195 Fax: (905) 562-4618
www.bilinesystems.com



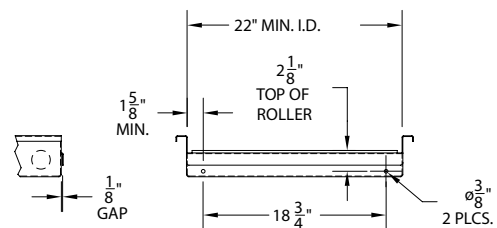
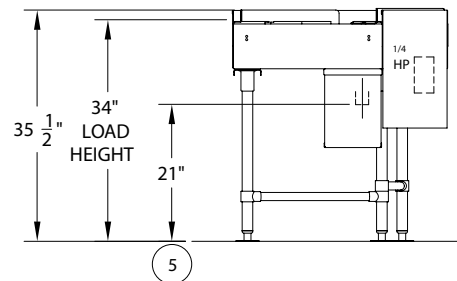
PRO-90B: Left to Right 



Typical Clean Table Connection to PRO-90B
(Flat Top Style Table)



PRO-90B: Right to Left 



Typical Clean Table Connection to PRO-90B
(Recommended Roller Style Table)

Utilities

- | | |
|----------|--|
| 1 | Drain
1-1/2" O.D. Slip-Fit Drain |
|----------|--|